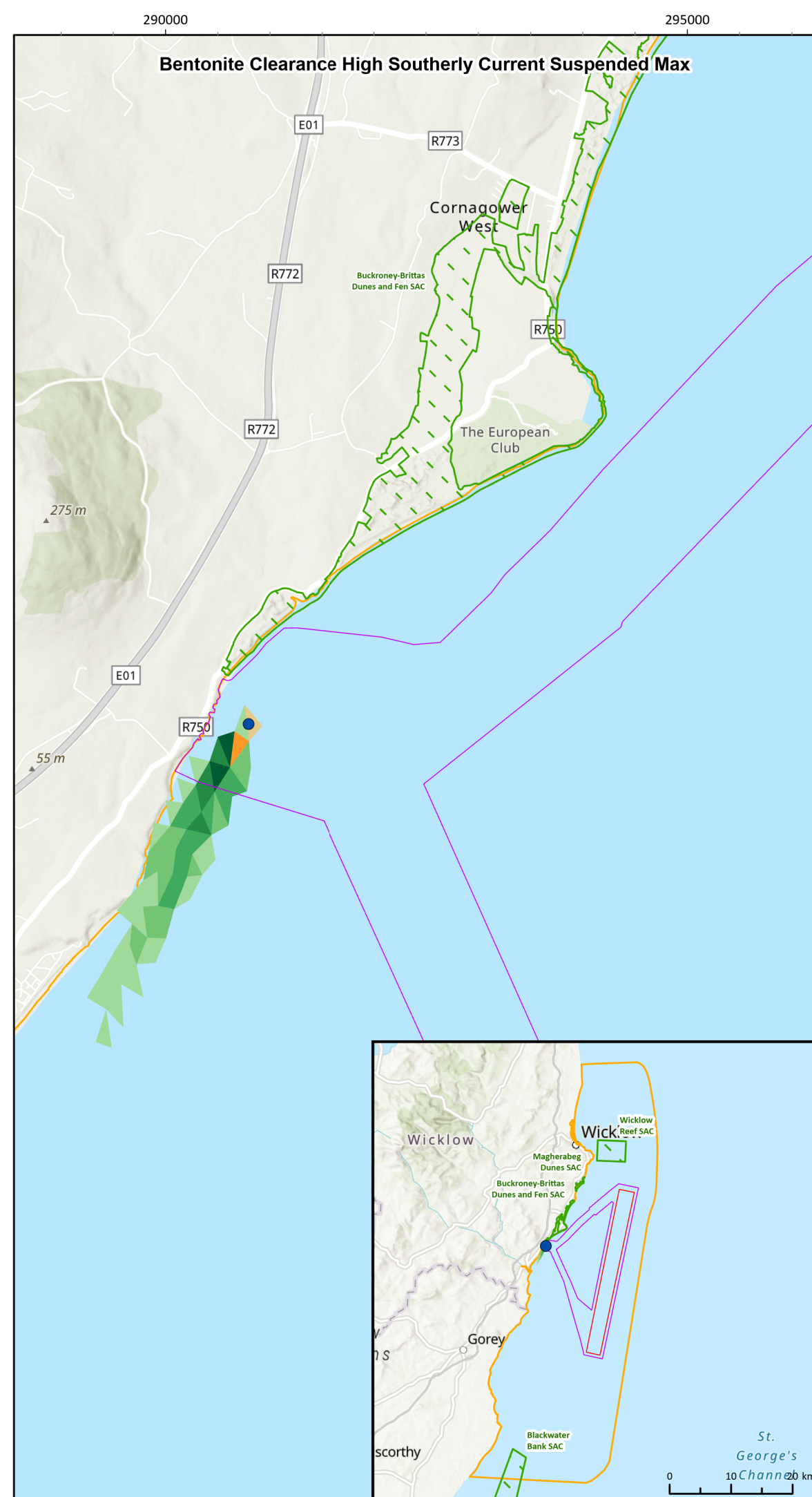


Figure Reference: Ark_Fig6.34_SuspendedSediment_Landfall



© This drawing and its content are the copyright of GoBe Consultants Ltd and may not be reproduced or amended except by prior written permission.



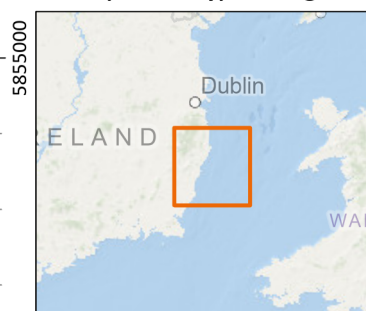
Arklow Bank Wind Park 2

Maximum Suspended Sediment Concentrations During Trenchless Landfall Activities*

Legend

- Modelled Bentonite Release Point
 - ABWP2 Array Area
 - ABWP2 Cable Corridor and Working Area
 - Coastal Processes Study Area
 - Special Area of Conservation (SAC)
- Suspended Sediment (mg/l)
- 1 - 2.49
 - 2.5 - 4.99
 - 4.5 - 9.99
 - 10 - 19.99
 - 20 - 31.7 (31.7 - Average Baseline SSC Value)
 - 31.8 - 44.99
 - 45 - 54.99
 - 55 - 64.99
 - 65 - 74.6 (74.6 - Maximum Baseline SSC Value)
 - 74.7 - 99.99
 - 100 - 249.99

*Shown for a Bentonite Release During a High Flood (Northerly) and High ebb (Southerly) Current



Notes

Esri, Intermap, NASA, NGA, USGS, OceanWise, Esri, GEBCO, Garmin, NaturalVue, Esri, CGIAR, USGS, Sources: Esri, TomTom, Garmin, FAO, NOAA, USGS, © OpenStreetMap contributors, and the GIS User Community. Contains Ordnance Survey data © Crown copyright and database rights (2022). OS OpenData.

Coordinate System:
ETRS 1989 UTM Zone 30N

0 1 2 km

0 0.5 1 nm

Scale 1:50,000 @ A3 Date 16/02/2026 Drawn By GB Checked By AK Approved By LK

Suites B2 & C2
Higher Mill
Higher Mill Lane
Buckfastleigh
Devon
TQ11 0EN
www.gobeconsultants.com
+44 (0)1626 323890



Figure Number 6.34